



# Why Monitor Acoustics 靜神 ?

---

AUDIO POWER TOTAL SOLUTIONS.

Why / What / Who / When / Where / How

*A combination of technology craftsmanship and sound of art. Complete insight on power network architecture & Never compromise with power quality.  
Present to you the silent environment and extend to the perfect soundstage.*



# About

## MONITOR ACOUSTICS

### AUDIO POWER TOTAL SOLUTIONS.

「Monitor Acoustics 靜神」  
(MA) is a leading power equipment supplier in the high-end audio equipment market: designed and manufactured in Taiwan and is well positioned to launch its product lines globally. Our story began with 「雅士音響 (ACE AUDIO)」 - a half-century old Hi-End audio distributor.

「MA 靜神」 realizes that to build any high-end audio equipment, the electrical power source is critical to the entire system.

◎ MA's patented power structure has three healthy L、N、G power lines.

◎ MA's every component has standard top-quality parts such as wires, metals and plastics, etc. And each of the component/part is individually tested to ensure the highest possible quality.

◎ MA's product includes uncompromised conductor's purity,

electroplating solution's formula, polishing method, isolation technology.

◎ MA's product not only elevates the efficiency and conductivity of power, in the meantime, it ensures both performance and power characteristics of extended bandwidth.

「MA 靜神」's mission has always been pursuing three goals -  
**“Purity, Strength and Beauty”.**

MA's product includes but not limited to - the isolation of the incoming line, grounding line, indoor line, power cable and isolated the vibration of suppression box, grounding device, ground plate, grounding tank to the very end - high-end iso wall socket, aluminum alloy wall socket cover, iso power defecator, audio power cables and its power network structure. Moreover, we have: RCA & XLR interconnect cables, USB data cable, speaker cable, iso &

vibration suppression power pin & socket, suppression cover, a tuning cones set, and tuning parts.

MA's product line not only will satisfy or exceed every audiophile's expectations and we are confident it can also fulfill the most sophisticated audio enthusiasts' demands. With its groundbreaking front to the end system, your audio system's potential will be in full display and with its relatively low cost and proven high quality, acquisition of MA 靜神 's product and system will be the best investment you will ever make.



# 1.How

**Whether you are a beginner, experienced audiophile or an ultimate enthusiast, a dedicated electrical system is a must.**

The most important source of audio is "electricity". Without electricity, all equipment will not work; but the electricity from the meter contains a lot of noise, surges.... hard to control or monitor. If users want to regain pure, uncompressed full-band power, they must check the links one by one, and at the same time, visually correct the system step by step. This is the way to pursue a ideal sound repression.

## 2.Why

**Why do you need a dedicated electrical system?**

For most people, they don't understand the hidden problems in the power line such as transient surges, noise potential differences, EMI, RFI... Etc. All of these can potentially negatively affect the performance of your audio system. Furthermore, the life of your equipments can be decreased and possibility of malfunction highly increases if a dedicated power solution isn't in place.



## 3.What

**What are the advantages of Monitor Acoustics electrical equipment?**

Monitor Acoustics recommends that the process must be personally and carefully verified. Regardless of the cost, we recommend only using materials with the highest to ensure the best result, and always keep up with the availability of the latest materials, technology, engineering and manufacturing process. MA's every assembly has to undergo countless physical tests and verification.

# MA Power 1H-5W

ALL A ROUND, PURE AND NEUTRAL. **THE CABLE THAT DOES THE BEST JOB FOR YOU.**



## 4. Who

**The only mission is to improve your system.**

*We are not the only audiophile for 40 years of experience, but willing to challenge for a better sound as a mission. Experiment every details in millimeters, decimeters, materials, finishes just to find the smartest solution.*

## 5. When

**Under what conditions, you need to optimize the electrical system.**

*We believe the sound performance of every audio system has room to improve and improve further. The electricity from your power company is definitely the first to consider as the power source. By switching to MA system, the stable and pure electricity can reduce the burden of your audio system's action and reduce the distortion and noise interference. As a result, the life of audio equipment can be extended. We recommend that users take about 20% budget to plan an improved power solution.*



## 6. Where

**Monitor Acoustics electrical system's architecture meets all your needs!**

*Monitor Acoustics electric system product line, from the basic household line, ground return system, electric box, indoor line, wall plug, etc., to various types of electric cleaners, power lines, speaker lines, signal lines, digital lines ...etc., it is one stop service/supply source for your electricity needs. It is recommended that users comprehensively upgrade the household electricity system in order to obtain the most perfect and ideal audio and video performance from the existing audio/video equipment.*



---

# Purified Power

NEW ENERGY PERFORMANCE SHOW. THE ULTIMATE HI-END EXPERIENCE.

MONITOR ACOUSTICS AUDIO POWER TOTAL SOLUTIONS.

---



It is generally recognized that an unpolluted electric power source is imperative in achieving ultimate hi-end audio condition. MA is committed to perfect the three power cables: (1) Live Wire, and (2) Neutral Wire; and (3) Ground / earth wire.

No small details are spared - the highest quality of parts and accessories are used; including but not limited to conductive metal, isolation material, vibration suppression plastics, etc.

Attention is focused on finding the best ratio for the recipe, which includes conductor's purity, plating formula, polishing method, isolation technology since it will affect the performance and its character to extend the frequency range on audio equipment. We may not be able to choose the electric power equipment before the meter, but consumers have the option to choose high quality and effective products.

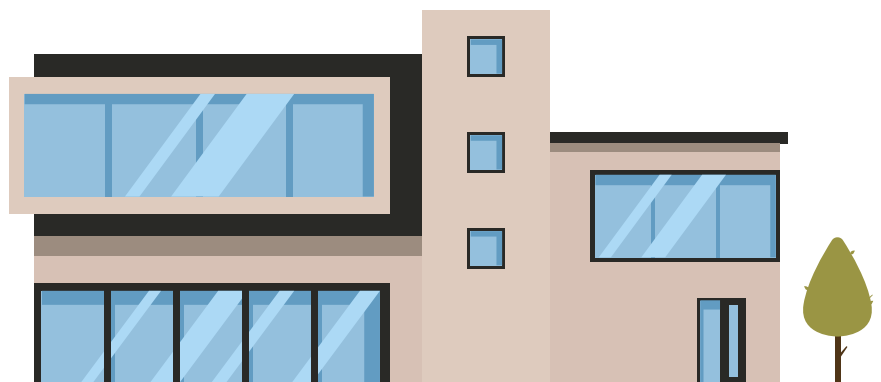
**MA's products include but not limited to the following:**

- ◎ outdoor single-core iso power cable
- ◎ indoor three-core iso power cable
- ◎ audio power cable
- ◎ high-voltage iso suppression power block
- ◎ grounding plate
- ◎ ground noise filter, ground tank ( for Virtual ground )
- ◎ high-end iso AC receptacle
- ◎ aluminum alloy duplex cover
- ◎ AC power purifier

**For system line:**

- ◎ RCA interconnect cable
- ◎ XLR balance cable
- ◎ USB digital cable
- ◎ fibre Optic Interconnect cable
- ◎ nano flow AC power Plug
- ◎ audio stabilizer board
- ◎ tuning cone and other tuning accessories

MA highly recommend completing a power system in audio-visual room from top to bottom all at the same time if space allows. With MA's complete power Solutions, it will greatly enhance any sound system to its full capacity and potential.



# THE ULTIMATE HI-END EXPERIENCE. MONITOR ACOUSTICS AUDIO POWER TOTAL SOLUTIONS.

**N**ew Energy Performance Show. Complete insight on power network architecture & Never compromise with power quality. A combination of technology craftsmanship and sound of art. All linked to one another, and even a little screw can be the key. Present to you the silent environment and extend to the perfect soundstage.



Single-core isolation power line / Super Grounding plate /  
Grounding interface processor / Ground Tank



HU-100M  
HU-110M  
HU-162M  
HU-163 MKII  
HU-220 MKII  
Isolation power line



PB125A-4 Master J  
PB100A-8 Master J  
PB100A-3 Master J  
Isolation power block



Single-core isolation power line



Isolation power block



Copper Terminal Plate

HIGH END SOUND ROOM



PB75A-6 Basic III  
PB60A-5 New Basic  
PB75A-8 New Basic  
PB75A-8 Studio  
PB75A-6 Studio III

Isolation power block

HIGH QUALITY HOME THEATER ROOM



PB75A-6 Basic III  
PB60A-5 New Basic  
PB75A-8 New Basic  
PB75A-8 Studio  
PB75A-6 Studio III

Isolation power block



three-core isolation power line



Isolation Wall Outlets



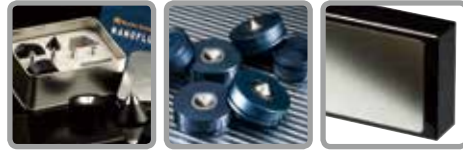
Isolation AC Receptacle



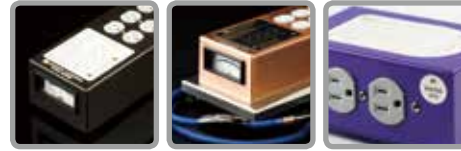
AC Power Plugs



AC Power Plugs



Insulator / Spike Base



AC Power Clean Conditions



Interconnector Line cable



AC Power Clean Conditions



three-core isolation power line



AC Power Plugs

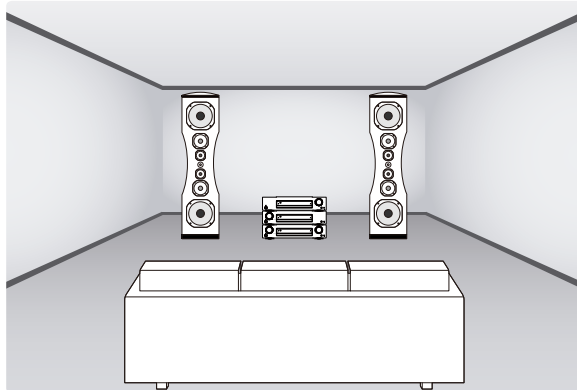


Insulator / Spike Base

SZZ-26M-LC OFC 5N-A  
SZZ-36M-LC OFC 5N-A  
SZZ-52M (6N OCC)  
SZZ-50 MKII (5N OCC)  
SZZ-55M (5N OCC)  
SZZ-56M (6N OCC)



Indoor three-core  
isolation power line



SN-110 / SN-220  
Glory SN-112 / SN-297  
AH-120  
Receptacle Cover Plate  
Duplex Cover  
power Box

IG AG-P  
IG AG-Q  
IG AG-I  
IG AG-H  
Isolation AC Receptacle



MA-2038  
MA-204/202 ART  
MA-204/202 NEW  
MA-1022  
T-8  
Power Clean Conditions

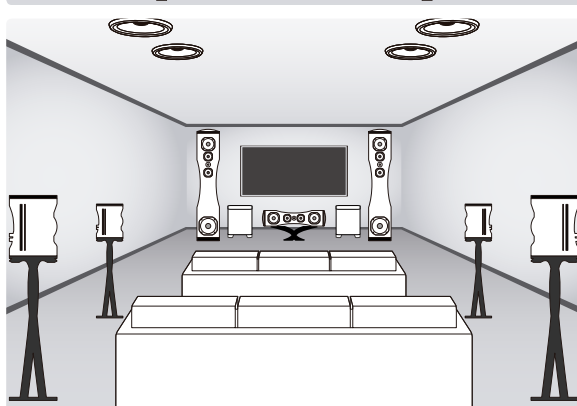


MaQ-301-D / MaQ-303-R / MaQ-305-R  
MaQ-RHB  
MaQ-503-R+ / MaQ-505-R+  
MaQ-705-R+  
AC Power Cable

SZZ-26M-LC OFC 5N-A  
SZZ-36M-LC OFC 5N-A  
SZZ-52M (6N OCC)  
SZZ-50 MKII (5N OCC)  
SZZ-55M (5N OCC)  
SZZ-56M (6N OCC)



Indoor three-core  
isolation power line



SN-110 / SN-220  
Glory SN-112 / SN-297  
AH-120  
Receptacle Cover Plate  
Duplex Cover  
power Box

IG AG-H  
Glory AG-M-SPD  
Glory AG-M-RH  
Glory AG-M-24K Gold  
Isolation AC Receptacle



MA-1022  
T-8  
Glory-New A Plus  
Glory-AGR Plus  
Glory-VGR  
Power Clean Conditions



MA-1015 / 1020  
MaQ-101-RG-R / MaQ-102-R  
MaQ-301-D / MaQ-303-R / MaQ-305-R  
MaQ-RHB  
AC Power Cable

\* **OCC**: OHNO CONTINUOUS CASTING, JAPAN PAT.1049146 / **LC-OFC**: Long Crystal Oxygen-free copper

Monitor Acoustics



single-core isolation power line



#### HU-100M Features:

Conductor: 5N LC-OFC high purity long crystal copper  
Wire body: 6 dielectric isolation protection  
W.D.: 9.89mm<sup>2</sup> /  
O.D.: 10.5mm±0.2mm /  
Color: green



#### HU-110M Features:

Conductor: 6N LC-OFC high purity long crystal copper  
Wire body: 6 dielectric isolation protection  
W.D.: 9.98mm<sup>2</sup> /  
O.D.: 10.5mm±0.2mm /  
Color: white or red



#### HU-162M Features:

Conductor: 4N LC-OFC high purity long crystal copper  
Wire body: 6 dielectric isolation protection  
W.D.: 16.32mm<sup>2</sup> /  
O.D.: 13.8mm±0.2mm /  
Color: blue or red



#### HU-163 MK2 Features:

Conductor: 5N LC-OFC high purity long crystal copper  
Wire body: 5 dielectric isolation protection  
W.D.: 16.32mm<sup>2</sup> /  
O.D.: 12.0mm±0.2mm /  
Color: Earth yellow



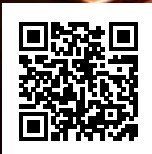
#### HU-220 MK2 Features:

Conductor: 5N LC-OFC high purity long crystal copper  
Wire body: 5 dielectric isolation protection  
W.D.: 22.7mm<sup>2</sup> /  
O.D.: 12.8mm±0.2mm /  
Color: gray

# single-core isolation power line

THE FIRST STEP INTO THE ROOM PROVIDES A STABLE, **SAFE AND ABUNDANT FAST TRACK.**

*Metal conductors are made of high purity LC-OFC long crystal copper.  
Wire body protection adopts multi-layer metal and plastic composite isolation dielectric.  
Effectively isolate external EMI, RFI RF intrusion.  
High-strength composite plastic, resistant to harsh weather and long service life.*





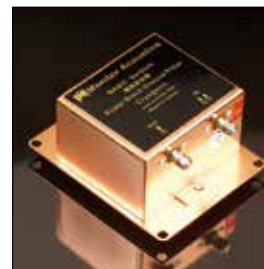
#### **M-460 / M-440 Features:**

MA-460 Super Grounding plate  
Dimensions: 600 x 400 x 40mm (W x H x D) / Weight: 16kg  $\pm$  5%  
MA-440 Super Grounding plate  
Dimensions: 400 x 400 x 40mm (W x H x D) / Weight: 11kg  $\pm$  5%



#### **MA-Grounding Tank Features:**

External Dimensions: W84.2 x H84.5 x D34.5cm  
Weight: 60kg / empty box  
Suitable for grounding to eliminate contaminated magnetic field soil.



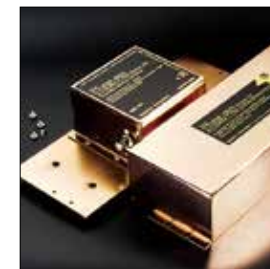
#### **Basic MK2 Features:**

Attenuation value: -50db Max /  
Withstand current: 20A  
Response frequency: Fo ~ 30Mhz  
Dimensions: 155 x 125 x 83mm  
(W x D x H / with foot pad)  
Weight: 1.8kg  $\pm$  5%



#### **Studio MK2 Version. 2.7 Features:**

Attenuation value: -60db Max /  
Withstand current: 20A  
Response frequency: Fo ~ 30Mhz  
Dimensions: 310 x 125 x 83mm  
(W x D x H / with foot pad)  
Weight: 3.3kg  $\pm$  5%



#### **Studio Pro Version. 5.6 Features:**

Attenuation value: -60db Max /  
Withstand current: 20A  
Response frequency: Fo ~ 30Mhz  
Dimensions: 310 x 125 x 83mm  
(W x D x H / with foot pad)  
Weight: 3.5kg  $\pm$  5%

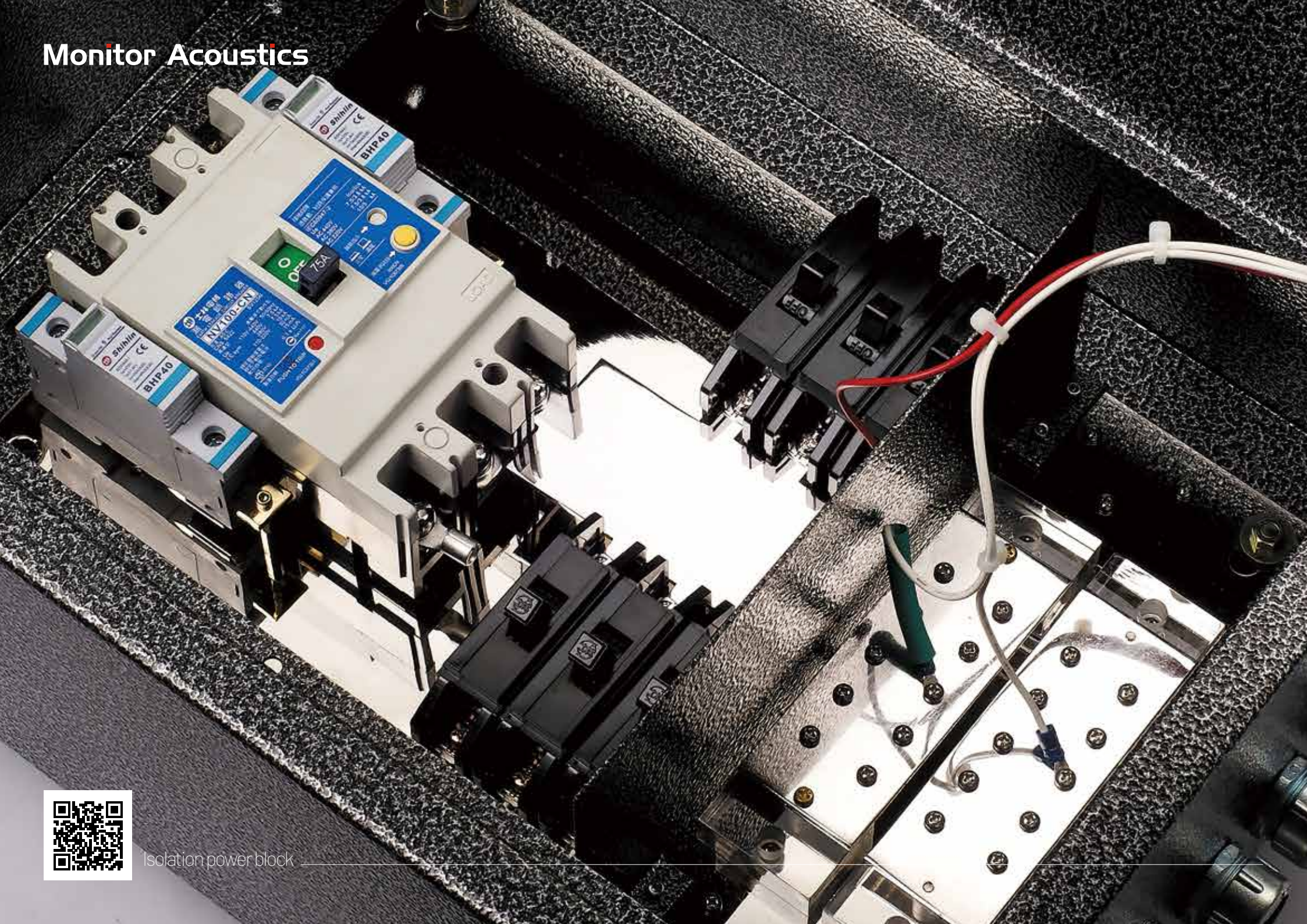
# Ground systems

UNPARALLELED WIDE-BANDWIDTH EFFECT **FOR THE MOST LIVELY AND DETAILED SOUND PERFORMANCE.**

*Thoroughly solve the problem of ground loop glitch and weak current, effectively eliminate noise interference.*

*Immediately reduce the reference potential difference to the ground, greatly improving power efficiency.*

*The ground return processor can only go out, effectively block the surge feedback, and quickly eliminate the ground loop noise, and reproduce the delicate deep background.*





#### PG-16 Features:

Conductor: High-purity crystalline copper alloy (two sets of 1.6mm<sup>2</sup> O-type terminals and fourteen sets of 4mm<sup>2</sup> O-type terminals)  
Size: W47 x H172 x D27mm / Weight: 225g / piece (two boxes in one box)



#### MA-PB75A-6 STUDIO II Features:

75A Single Phase 6way output (1~4-20A)(5~6-30A)  
Dimensions: W36.6 x H50.6 x D17.6cm / Weight: 21.4Kg ±5%  
Vibration-proof structure  
Conductive copper, polished handle, high-end electroplating, cryogenic treatment.



#### MA-PB75A-6 STUDIO III Features:

75A Single Phase 6way output (1~4-20A) (5~6-30A)  
Dimensions: W38.6 x H50.6 x D17.6cm / Weight: 24.8Kg ±5%  
Vibration-proof structure  
Conductive copper, polished handle, high-end electroplating, cryogenic treatment.



#### MA-PB75A-8 STUDIO Features:

75~100A Single Phase 8way output (1~6-20A)(7~8-30A)  
Dimensions: W42.6 x H68.8 x D18cm / Weight: 24.55Kg ±5%  
Vibration-proof structure  
Conductive copper, polished handle, high-end electroplating, cryogenic treatment.



#### MA-PB100A-3 Master J Features:

100A Single Phase 3way output.  
Dimensions: W36 x H56 x D12cm / Weight: 22.4Kg ±5%  
With Basic II Ground Filtr, Vibration-proof structure  
Conductive copper, polished handle, high-end electroplating, cryogenic treatment.



#### MA-PB125A-4 Master J Features:

100~125A Single Phase 4way output. Dimensions: W33.8 x H50.5 x D12cm / Weight: 15.6Kg ±5%  
Vibration-proof structure  
Conductive copper, polished handle, high-end electroplating, cryogenic treatment.



#### MA-PB75A-6 BASIC II Features:

75A Single Phase 6way output (1~4-20A)(5~6-30A)  
Dimensions: W33.7 x H44.8 x D18.5cm / Weight: 21.1Kg ±5%  
Vibration-proof structure  
Conductive copper, polished handle, high-end electroplating, cryogenic treatment.



#### MA-PB75A-6 BASIC III Features:

75A Single Phase 6way output (1~4-20A)(5~6-30A)  
Dimensions: W38.6 x H50.6 x D17.6cm / Weight: 23.6Kg ±5%  
Vibration-proof structure  
Conductive copper, polished handle, high-end electroplating, cryogenic treatment.



#### MA-PB60A-5 NEW Basic Features:

60A Single Phase 5way output (1~4-20A)(5-30A)  
Dimensions: W33.8 x H50.5 x D12cm / Weight: 18.3Kg ±5%  
Vibration-proof structure  
Conductive copper, polished handle, high-end electroplating, cryogenic treatment.



#### MA-PB75A-8 NEW Basic Features:

75A Single Phase 8way output (1~6-20A)(7~8-30A)  
Dimensions: W36 x H56 x D12cm / Weight: 22.1Kg ±5%  
Vibration-proof structure  
Conductive copper, polished handle, high-end electroplating, cryogenic treatment.

# Isolation power block

CONVERGENCE OF THE LIBRARY OF ELECTRIC ENERGY, **SHOWING THE FULL-BANDWIDTH SHUNT PERFORMANCE.**

*Stable and shockproof electric box structure design, specially designed for the isolation of the sound room.  
Metal isolation board and reinforced structure allow clean electricity to be smoothly distributed in the chassis.*

*Any small details that affect the quality of the power supply are not missed.  
Quickly release potential differences, allowing power to advance in ample and fast circuits.*

Monitor Acoustics



three-core isolation power line

**SZZ-26M-5N-A Features:**

Conductor: 5N LC-OFC high purity long crystal copper  
Wire body: 7 dielectric isolation protection  
W.D.: 2.54mm<sup>2</sup> / O.D.: 12.5mm ± 0.2mm  
Color: brown

**SZZ-36M-5N-A Features:**

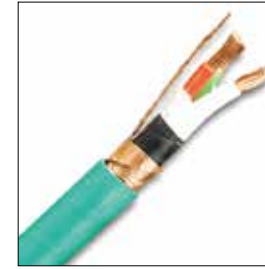
Conductor: 5N LC-OFC high purity long crystal copper  
Wire body: 7 dielectric isolation protection  
W.D.: 3.5mm<sup>2</sup> / O.D.: 13.0mm ± 0.2mm  
Color: black

**SZZ-50 MKII Features:**

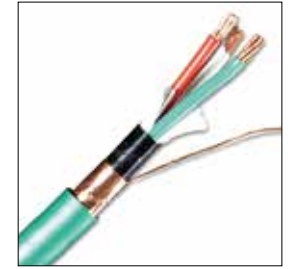
Conductor: 5N OCC high purity single crystal copper  
Wire body: 6 dielectric isolation protection  
W.D.: 3.61mm<sup>2</sup> / O.D.: 12.5mm ± 0.2mm  
Color: green

**SZZ-52M Features:**

Conductor: 6N OCC high purity single crystal copper  
Wire body: 6 dielectric isolation protection  
W.D.: 3.61mm<sup>2</sup> / O.D.: 12.5mm ± 0.2mm  
Color: purple

**SZZ-55M Features:**

Conductor: 5N OCC high purity single crystal copper  
Wire body: 6 dielectric isolation protection  
W.D.: 5.58mm<sup>2</sup> / O.D.: 14.5mm ± 0.2mm  
Color: green

**SZZ-56M Features:**

Conductor: 6N OCC high purity single crystal copper  
Wire body: 6 dielectric isolation protection  
W.D.: 5.55mm<sup>2</sup> / O.D.: 14.5mm ± 0.2mm  
Color: green

---

# three-core isolation power line

ACHIEVE OPTIMAL POWER TRANSFER EFFICIENCY WITH RIGOROUS MANUFACTURING PROCESSES, **IT'S THAT SIMPLE!**

---

*High voltage resistance, high current energy transmission, showing the power transmission capacity of sound level.  
Multi-layer dielectric layer blocks external invisible magnetic interference and provides a pure power source for the user.*

*The purity of the conductor, the arrangement of the core wire  
and the twisting direction are all carefully designed to make the sound show delicate and rich.*



**Glory AG-M-24K Gold Features:**

The conductor is made of High purity crystalline copper.  
The 12 hours / -196°C cryogenic treated.  
Size: 34×96×22.5mm (W×H×D)  
Weight: 54g

**Glory AG-M-RH Features:**

The conductor is made of High purity crystalline copper.  
The 12 hours / -196°C cryogenic treated.  
Size: 34×96×22.5mm (W×H×D)  
Weight: 54g

**Glory AG-M-SPD Features:**

The conductor is made of High purity crystalline copper.  
The 12 hours / -196°C cryogenic treated.  
Size: 34×96×22.5mm (W×H×D)  
Weight: 54g

**IG AG-I Features:**

The conductor is made of beryllium copper alloy.  
The conductor is designed with 5 pin contacts.  
The 12 hours / -196°C cryogenic treated.  
Size: 34×93.5×30mm (W×H×D) /  
Weight: 100g

**IG AG-H Features:**

The conductor is made of beryllium copper alloy.  
The conductor is designed with 5 pin contacts.  
The 12 hours / -196°C cryogenic treated.  
Size: 34×93.5×30mm (W×H×D) /  
Weight: 96g

**IG AG-Q Features:**

The conductor is made of beryllium copper alloy.  
The conductor is designed with 5 pin contacts.  
The 12 hours / -196°C cryogenic treated.  
Size: 34×93.5×30mm (W×H×D) /  
Weight: 100g

**IG AG-P Features:**

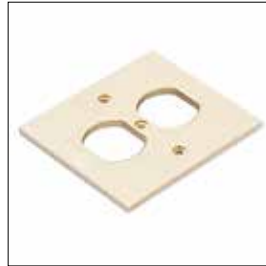
The conductor is made of beryllium copper alloy.  
The conductor is designed with 5 pin contacts.  
The 12 hours / -196°C cryogenic treated.  
Size: 34×93.5×30mm (W×H×D) /  
Weight: 100g

**PLA-100 Features:**

In the simplest way,  
Hear the noise of electricity.  
Size: 132×65×157mm (W×H×D)  
Weight: 855g

**AH-120 Features:**

TMetal power box: aluminum alloy die-casting  
hard special steel baking  
Size: 79×152×48mm (W×H×D)  
Weight: 200g

**Glory SN-297 Features:**

Aerospace grade aluminum alloy.  
Size: 86×97×4mm (W×H×D)  
Weight: 71g  
Color: Gold / Silver

**Glory SN-112 Features:**

Aerospace grade aluminum alloy.  
Size: 70×120×4mm (W×H×D)  
Weight: 75g  
Color: Gold / Silver

**SN-220 Features:**

aviation grade aluminum alloy cover  
special power head locking device  
20A socket (American Hubbell)  
Size: 87×87×70mm (W×H×D) /  
Weight: 230g

**SN-110 Features:**

aviation grade aluminum alloy cover  
special power head locking device  
20A socket (American Hubbell)  
Size: 72×115×64mm (W×H×D) /  
Weight: 235g

# Isolation AC Receptacle

CLEARLY AND CLEARLY FIND THE DIRECTION OF THE SOUND, TO CREATE THE EMOTIONAL ATMOSPHERE IN THE MUSIC.

*Pay attention to every link, Give electricity an unimpeded bridge.*

*Special copper alloy conduction core, Rare complex multi-claw clip design.*

*Ultra-cold treatment at -196 °C allows metal atoms to bond more tightly and eliminate metal stress.*

*Provides continuous and stable power, and extends the full-bandwidth electrical energy to the audio equipment without loss.*





#### MA-1022 GR-L Features:

Cast aluminum alloy casing, With MA purification circuit.  
Strengthen the grounding line, Pointer voltmeter.  
The 12 hours / -196°C cryogenic treated.  
Size: 325×90×125mm (W×H×D) / Weight: 3.1kg



#### MA-1022 MK4 Features:

Cast aluminum alloy casing, With MA purification circuit.  
Strengthen the grounding line, Pointer voltmeter.  
The 12 hours / -196°C cryogenic treated.  
Size: 325×90×125mm (W×H×D) / Weight: 3.1kg



#### MA-202 NEW Features:

The third-order power purification treatment reaches -77db,  
Maximum current resistance: 15A-120V / 10A-250V.  
Size: 300×85×100mm (W×H×D) / Weight: 1.6kg  
Color: champagne gold / mineral blue



#### MA-204 NEW Features:

The third-order power purification treatment reaches -75db,  
Maximum current resistance: 15A-120V / 10A-250V.  
Size: 400×85×100mm (W×H×D) / Weight: 2.2kg  
Color: champagne gold / mineral blue



#### MA-202 ART Features:

The third-order power purification treatment reaches -77db,  
Maximum current resistance: 15A-120V / 10A-250V.  
Size: 300×85×100mm (W×H×D) / Weight: 1.6kg  
Color: champagne gold / mineral blue



#### MA-204 ART Features:

The third-order power purification treatment reaches -75db,  
Maximum current resistance: 15A-120V / 10A-250V.  
Size: 400×85×100mm (W×H×D) / Weight: 2.2kg  
Color: champagne gold / mineral blue



#### MA-2038 Features:

Special aluminum alloy die-casting. The power frequency of the action is from FO~1GHz.  
Four special isolation power outlets  
Size: 370×100×175mm (W×H×D) / Weight: 8.0kg



#### GLORY V For Video Features:

Designed for video equipment  
Power clean circuit for video design  
Size: 140×72×90mm (W×H×D)  
Weight: 808g



#### GLORY A-Plus For Audio Features:

Designed for audio equipment  
Power clean circuit for audio design  
Size: 140×72×90mm (W×H×D)  
Weight: 808g



#### GLORY New A-Plus For Audio Features:

Shortest path for audio architecture,  
Upgrade the power outlet.  
Internal wire changed to 5N high purity copper wire  
Size: 140×72×90mm (W×H×D)  
Weight: 808g



#### GLORY VGR For Video Features:

Designed for video equipment  
Enhanced ground loop  
Size: 140×72×90mm (W×H×D)  
Weight: 815g



#### GLORY AGR-Plus For Audio Features:

Designed for audio equipment  
Enhanced ground loop  
Size: 140×72×90mm (W×H×D)  
Weight: 815g



#### T-8 Gold breaker Features:

Cast aluminum alloy casing, With MA purification circuit.  
Strengthen the grounding line, Pointer voltmeter.  
The 12 hours / -196°C cryogenic treated.  
Size: 325×90×125mm (W×H×D) / Weight: 3.0kg



#### T-8 GR Features:

Cast aluminum alloy casing, With MA purification circuit.  
Strengthen the grounding line, Pointer voltmeter.  
The 12 hours / -196°C cryogenic treated.  
Size: 325×90×125mm (W×H×D) / Weight: 3.0kg



#### MaQ-1.0 STD Features:

custom-made version by MA using the "MaQ" process.  
Carbon fiber and aluminum alloy, With MA purification circuit.  
Size: about 38 × 130mm (Ø × H)  
Weight: about 155g / piece



#### ACE-2.0 Reference Features:

custom-made version by MA using the "ACE" process.  
Carbon fiber and aluminum alloy, With MA purification circuit.  
Size: about 38 × 130mm (Ø × H)  
Weight: about 155g / piece

# AC Power Clean Conditions

ELIMINATE SURGES AND NOISE IN ELECTRICITY, RESTORE POWER SHOULD BE PURE AND FLAWLESS.

*The shell is made of cast aluminum alloy with MA self-made power socket.  
In addition to the MA purification circuit, the grounding circuit is further strengthened.  
The inner conductors are ultra-cooled at -196°C to eliminate metal physical stress.  
Porous power socket design, use of digital and analog equipment's individually.*

# Monitor Acoustics



## 2019 LATEST FLAGSHIP SIGNATURE EDITION



### kenStyle Silver Features:

Conductor using unstressed 6N OCC high purity single crystal copper. Use the latest kenStyle Silver AC Connectors. special olive alloy vibration suppressor. Withstand voltage: 600V / 15A, Length: 2.0m



### kenStyle Red Features:

Conductor using unstressed 5N OCC high purity single crystal copper. Use the latest kenStyle Red AC Connectors. special olive alloy vibration suppressor. Withstand voltage: 600V / 15A, Length: 1.8m



Isolation Power Cable



**MaQ-RHB Features:**

Conductor using unstressed 5N OCC high purity single crystal copper. "ACE" custom-made version by MA using the "MaQ R+Plus" process. exclusive formula dielectric plastic technology. Withstand voltage: 600V / 15A, Length: 1.8m



**MaQ-301-D Features:**

Conductor using unstressed 5N LC-OFC / 4N OFC high purity long crystal copper. exclusive formula dielectric plastic technology. using "MAQ-Blue" custom-made version by MA process. Withstand voltage: 600V / 15A, Length: 1.8m



**MaQ-303-R Features:**

Conductor using unstressed 5N LC-OFC high purity long crystal copper. exclusive formula dielectric plastic technology. special olive alloy vibration suppressor. Withstand voltage: 600V / 15A, Length: 1.8m



**MaQ-305-R Features:**

Conductor using unstressed 5N LC-OFC high purity long crystal copper. exclusive formula dielectric plastic technology. special olive alloy vibration suppressor. Withstand voltage: 600V / 15A, Length: 1.8m



**MaQ-503-R+ Features:**

Conductor using unstressed 5N OCC high purity single crystal copper. "ACE" custom-made version by MA using the "MaQ R+Plus" process. special olive alloy vibration suppressor. Withstand voltage: 600V / 15A, Length: 1.8m



**MaQ-505-R+ Features:**

Conductor using unstressed 5N OCC high purity single crystal copper. "ACE" custom-made version by MA using the "MaQ R+Plus" process. special olive alloy vibration suppressor. Withstand voltage: 600V / 15A, Length: 1.8m



**MaQ-705-R+ Features:**

Conductor using unstressed 6N OCC high purity single crystal copper. "Tai-Chi" custom-made version by MA using the "MaQ R+Plus" process. special olive alloy vibration suppressor. Withstand voltage: 600V / 15A, Length: 1.8m



**MA-1200 Features:**

Getting started preferred conductor using unstressed high purity crystal copper. Use MA special production AC Connectors and " Hubbell " International Corporation 20A IEC Connectors. Withstand voltage: 600V / 20A, Length: 1.8m



**MA-2200 Features:**

Conductor using unstressed 6N OCC high purity single crystal copper. Use MA special production AC Connectors and " Hubbell " International Corporation 20A IEC Connectors. Withstand voltage: 600V / 20A, Length: 2.0m



**MA-2200 PRO Features:**

Conductor using unstressed 6N OCC single crystal copper. Use MA special production AC Connectors and " Hubbell " International Corporation 20A IEC Connectors. special olive alloy vibration suppressor. Withstand voltage: 600V / 20A, Length: 2.0m



**MaQ-101-RG / R Features:**

Conductor using unstressed 5N LC-OFC / 4N OFC (GND) high purity crystal copper. using "MAQ-RG/R" custom-made version by MA process. exclusive formula dielectric plastic technology. Withstand voltage: 600V / 15A, Length: 1.5m



**MaQ-102-R Features:**

Conductor using unstressed 5N LC-OFC / 4N OFC (GND) high purity crystal copper. using "MAQ-R" custom-made version by MA process. exclusive formula dielectric plastic technology. Withstand voltage: 600V / 15A, Length: 1.5m

# Isolation Power Cable

ELEGANT AND CALM, FREE AND EASY, LET YOU TOUCH THE SOUND THAT YOU HAVE NEVER HAD BEFORE.

*The core conductor uses unstressed, high-purity single-crystal copper and is designed with special strand winding technology. Multi-layer unique dielectric plastic, coiled with thick copper, 100% blocking external interference. MA self-made sound grade IEC Connectors, with special olive type alloy vibration suppressor. Pay attention to the order of production, providing a wide and unobstructed passage of electrical energy.*





#### MaQ R-41 Features:

polymer engineering plastic, beryllium copper gold plated alloy. Conductor is made of 6N LC-OFC high-precision copper, plus multi-channel dielectric vibration-proof protective layer. Length: 1.5m



#### MaQ R-51 Features:

polymer engineering plastic, beryllium copper gold plated alloy. Conductor is made of 6N LC-OFC high-precision copper, plus multi-channel dielectric vibration-proof protective layer. Length: 1.5m



#### MA-2.5 Red RCA Features:

ensures that radio frequency noise will not be induced into the signal conductors from the Dielectric bias Interconnector Line cable. Battery: 60V Carbon Fiber Battery Tube / 12V\*5 ( Life 5 years ) Size: 1.25m



#### MA-2.5 Blue RCA Features:

ensures that radio frequency noise will not be induced into the signal conductors from the Dielectric bias Interconnector Line cable. Battery: 60V Carbon Fiber Battery Tube / 12V\*5 ( Life 5 years ) Size: 1.25m



#### MA-3.0 Red RCA Features:

ensures that radio frequency noise will not be induced into the signal conductors from the Dielectric bias Interconnector Line cable. Battery: 60V Carbon Fiber Battery Tube / 12V\*5 ( Life 5 years ) Size: 1.5m



#### MA-3.0 Blue RCA Features:

ensures that radio frequency noise will not be induced into the signal conductors from the Dielectric bias Interconnector Line cable. Battery: 60V Carbon Fiber Battery Tube / 12V\*5 ( Life 5 years ) Size: 1.5m



#### MaQ XL-63 Features:

Aviation aluminum, beryllium copper gold plated alloy. Conductor is made of 6N LC-OFC high-precision copper, plus multi-channel dielectric vibration-proof protective layer. Length: 1.8m



#### MA-3.5 Red XLR Features:

ensures that radio frequency noise will not be induced into the signal conductors from the Dielectric bias Interconnector Line cable. Battery: 60V Carbon Fiber Battery Tube / 12V\*5 ( Life 5 years ) Size: 1.5m



#### MA-3.5 Blue XLR Features:

ensures that radio frequency noise will not be induced into the signal conductors from the Dielectric bias Interconnector Line cable. Battery: 60V Carbon Fiber Battery Tube / 12V\*5 ( Life 5 years ) Size: 1.5m



#### MA-4.0 Red XLR Features:

ensures that radio frequency noise will not be induced into the signal conductors from the Dielectric bias Interconnector Line cable. Battery: 60V Carbon Fiber Battery Tube / 12V\*5 ( Life 5 years ) Size: 2.0m



#### MA-4.0 Blue XLR Features:

ensures that radio frequency noise will not be induced into the signal conductors from the Dielectric bias Interconnector Line cable. Battery: 60V Carbon Fiber Battery Tube / 12V\*5 ( Life 5 years ) Size: 2.0m

# Interconnector cable

ARRANGED NEATLY, USING "ELECTRICITY" TO LEAD A FAITHFUL AND ACCURATE SCENE SOUND.

*The core conductor uses unstressed, high-purity single-crystal copper and unobstructed passage of electrical energy.*

*Connect multiple special batteries in series to make the uneven charge on the insulation layer neatly arranged.*

*The MA uses Dielectric bias to "polarize" the insulation of the wire to isolate external RF interference, making signal transmission faster and more accurate, and optimizing signal transmission.*

# Monitor Acoustics



Isolation Speaker Cable

**Boeing 727 Features:**

high-purity oxygen-free copper two-strand wire, Special PVC rubber, aluminum foil Mylar, Special Y-type plug terminal. Size: 4.0m

**MA-STRENGTH Features:**

High-purity LC-OFC oxygen-free copper two-strand wire, Special PVC rubber, aluminum foil Mylar, Special Banana Connectors plug terminal. Size: 3.0m

**MA-2000 Features:**

SPC copper-plated silver, high-purity oxygen-free copper mixed positive and negative two-strand wire. Special PVC rubber, aluminum foil Mylar, plastic woven mesh are used as interference to isolate EMI/RFI. Special Y-type plug terminal. Size: 3.0m

**MA-Zentra Features:**

without internal stress 5N LC-OFC copper wire. Special rubber is used with Teflon and thick copper foil for dielectric isolation. has an olive-shaped stabilizer that for more subtle tuning. Special double-layer structure design Y-plug terminal. Length: 3.0m

---

# Isolation Speaker Cable

NATURAL AND TRUE SOUND QUALITY, **FAITHFULLY REPRODUCE THE SOUND YOUR SYSTEM SHOULD HAVE.**

---

*The core wire uses LC-OFC long crystal copper for a stress-free process.  
Special rubber is used with Teflon and thick copper foil for dielectric isolation.  
Insulate the interference of external electromagnetic fields and completely block the invisible noise.  
The special double-layer Y-insert structure design utilizes an elastic buffer layer to make the contact surface more compact.*

# Monitor Acoustics

*Signature*

Total Power System Solution From Monitor Acoustics

Monitor Acoustics



## 2019 LATEST FLAGSHIP SIGNATURE EDITION



### kenStyle Silver Features:

male: Custom pure copper / female: beryllium copper, gold plated rhodium plated, -196°C ultra-low temperature treatment, floating bronze degaussing technology, "kenStyle Silver" composite nano dielectric core, Carbon fiber and high-strength Non-magnetic steel housing.



### kenStyle Red Features:

male: Custom pure copper / female: phosphor bronze, copper plated gold plated rhodium plated, -196°C ultra-low temperature treatment, floating bronze degaussing technology, "kenStyle Red" composite nano dielectric core, Carbon fiber and high-strength Non-magnetic steel housing.



Isolation Power Connectors



#### **MaQ-B M2/F2 RH Features:**

three-phase Custom copper Gold plated + rhodium plated. -196°C ultra-low temperature treatment, Unique isolation electromagnetic alloy structure, MAQ composite nano dielectric core, high-strength temperature-resistant vibration-suppressing polycarbonate.



#### **Glory-M2/F2 GC Features:**

three-phase Custom copper gold plated. -196°C ultra-low temperature treatment, Unique isolation electromagnetic alloy structure, Glory composite nano dielectric core, high-strength temperature-resistant vibration-suppressing polycarbonate.



#### **ACE-M3/F3 RH Features:**

three-phase Custom copper, gold plated + rhodium plated. -196°C ultra-low temperature treatment, floating bronze degaussing technology, ACE composite nano dielectric core, high-strength temperature-resistant vibration-suppressing polycarbonate.



#### **Tai-Chi M3/F3 RC Features:**

three-phase Custom copper, gold plated + rhodium plated. -196°C ultra-low temperature treatment, floating bronze degaussing technology, Tai-Chi-A composite nano dielectric core, high-strength temperature-resistant vibration-suppressing polycarbonate.



#### **R-33-BA Features:**

The material is made of Tellurium Copper alloy. Tellurium copper terminal is rhodium-plated and treated at -196°C ultra-low temperature. insulating materials use several trace elements, Can release a small amount of negative ions in the invisible.



#### **MaQ-M2/F2 SPD Features:**

three-phase Custom copper Silver plated + palladium plated. -196°C ultra-low temperature treatment, Unique isolation electromagnetic alloy structure, MAQ composite nano dielectric core, high-strength temperature-resistant vibration-suppressing polycarbonate.



#### **MaQ-M2/F2 RH Features:**

three-phase Custom copper Gold plated + rhodium plated. -196°C ultra-low temperature treatment, Unique isolation electromagnetic alloy structure, MAQ composite nano dielectric core, high-strength temperature-resistant vibration-suppressing polycarbonate.



#### **MaQ-M2/F2 Gold Features:**

three-phase Custom copper gold plated. -196°C ultra-low temperature treatment, Unique isolation electromagnetic alloy structure, MAQ composite nano dielectric core, high-strength temperature-resistant vibration-suppressing polycarbonate.

# Connector for nanoflux technology practice

IMPECCABLE CRAFTSMANSHIP, **SHOWING THE ULTIMATE IN TRUE SOUND.**

*In each Power Connector the conductive alloys are different, the plating is different in order to adapt to a variety of audio equipment, just to achieve the best sound performance. The conductive alloys are all ultra-low temperature treated at -196°C and ultra-slow fine grinding to eliminate stress and enhance contact conduction. The internal structure incorporates an unique magnetically permeable alloy and floating bronze degaussing technology to accelerate the complete release of EMI and RFI.*





#### MA-3512B Features:

Designed to stabilize Bookshelf speaker and Audio equipment.  
Material: S45C carbon steel + high hardness 7XXX aluminum alloy  
Size: about 32 × 12mm (Ø × H)  
Weight: about 34.9g / piece



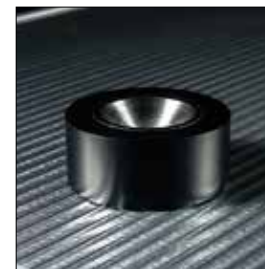
#### MA-3512A Features:

Designed to stabilize Bookshelf speaker and Audio equipment.  
Material: S45C carbon steel + high hardness 7XXX aluminum alloy  
Size: about 32 × 12mm (Ø × H)  
Weight: about 34.8g / piece



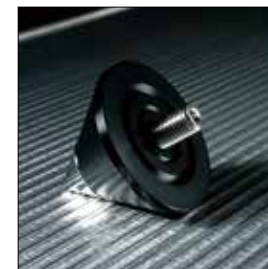
#### MA-3210 Features:

Designed to stabilize medium / Bookshelf speaker.  
Material: S45C carbon steel + high hardness 7XXX aluminum alloy  
Size: about 32 × 10mm (Ø × H)  
Weight: about 26.1g / piece



#### MA-4218 Features:

Designed to stabilize large-scale floor-standing speakers.  
Material: S45C carbon steel + high hardness 7XXX aluminum alloy  
Size: about 42 × 18mm (Ø × H)  
Weight: about 99.5g / piece



#### MA-4236 Features:

Designed to stabilize large-scale floor-standing speakers.  
Material: S45C carbon steel + high hardness 7XXX aluminum alloy  
Size: about 42 × 36mm (Ø × H)  
Weight: about 71.0g / piece (including fixing screws)



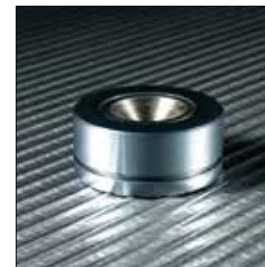
#### STA-2.0 Features:

It effectively suppresses the micro-vibration generated by the circuit components, enhances the detail density of the sound, and makes the musical form more clear and cohesive.  
Size: 183 × 27 × 72mm (W × H × D) / Weight: 2.0kg



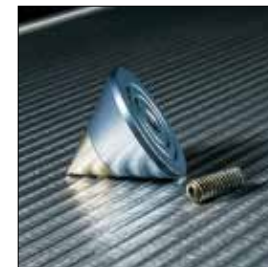
#### MA-2215 Features:

Designed to stabilize Small speaker and Audio equipment.  
Material: S45C carbon steel + high hardness 7XXX aluminum alloy  
Size: about 22 × 15mm (Ø × H)  
Weight: about 14.7g / piece (including fixing screws)



#### MA-3214 Features:

Designed to stabilize Bookshelf speaker and Audio equipment.  
Material: S45C carbon steel + high hardness 7XXX aluminum alloy  
Size: about 32 × 14mm (Ø × H)  
Weight: about 41.0g / piece



#### MA-3227 Features:

Designed to stabilize Bookshelf speaker and Audio equipment.  
Material: S45C carbon steel + high hardness 7XXX aluminum alloy  
Size: about 32 × 27mm (Ø × H)  
Weight: about 28.0g / piece (including fixing screws)

# Damper Feet and Spikes

RESONANCE AND MICROSEISMS ALL DISSIPATED, AND CONDENSED THE COMPLETE ORIGINAL APPEARANCE OF MUSIC.

*Utilize the non-resonant material to eliminate the micro-vibration and let the micro-vibration stops here.  
Using a composite material of carbon steel and aluminum alloy, the size is designed to be the most perfect, and the best suppression resonance point is achieved. After careful grinding the surface of the cone pad, a number of deep and shallow grooves are specially cut to eliminate different resonance frequencies, and the surface is further reinforced by anodizing.*



**Monitor Acoustics**

10654 4F., NO.221-7, SEC. 3, ZHONGXIAO E. RD., DAAN DIST., TAIPEI CITY 106, TAIWAN (R.O.C.)  
[HTTP://WWW.MONITOR-ACOUSTICS.COM/](http://www.monitor-acoustics.com/)